

**You Have Health Insurance Options
We Are Here to Help!**

Tuesdays and Thursdays 10AM to 6PM

St. Peter's Rectory, 127 Church Street, Westernport, MD

**We provide free in-person assistance to help you understand
your health insurance options.**

**If you think you might be losing or have recently lost your
health insurance, please stop by and talk with us!**

**If you currently do not have insurance,
we want to talk to you too!**

No Appointment Necessary

Call Us at: 888-202-0212

Your Support Touches Many Lives in Many Special Ways!

Hospice of Garrett County, Inc. provides total in-home or home-like care for terminally ill patients with six months or less to live if the disease follows its normal progression.

Hospice provides home health care, nurses social workers, volunteer caregivers, dietary counseling, medical supplies, equipment, medications, and short-term or respite care as needed at no cost to the patient or family.

Following a patient's death, Hospice of Garrett County provides bereavement services and support to family members and caregivers for up to 13 months.

Your support and contributions help us offer these services throughout Garrett County. Your help is greatly appreciated.

Thank You!!!



P.O. Box 271
Oakland, MD 21550
301.334.5151
djbreman1@gmail.com

Hope, Dignity, Love...

How to Participate

Walkers will meet on Sunday June 16, 2019 at 2PM. **RAIN OR SHINE.** Donations received will be collected on the day of the walk. Walkers will have the choice of walking route lengths, ranked from beginner to intermediate.

Prizes

Prizes awarded to those who have raised and turned in the most donations by the day of the walk:

Most Donations Raised:

\$1,000.00 in Prizes!

Second Highest In Donations Raised:

\$250.00 in Prizes!

Third Highest In Donations Raised:

\$100.00 in Prizes!

Special Drawings for extra prizes for all participants and a shirt for each walker who brings in \$50.00 in donations.

Waiver of Responsibility

As a willing participant in "Walk for Hospice", I hereby release Hospice of Garrett County, Inc., its Board of Directors and Officers,

Employees and Agents, as well as all other persons and entities sponsoring or participating in this event, The Town of Oakland, The Glades Town Park, from all liability or other claims or demands for damages arising directly or indirectly out of my participation, or that of my child, or any child for which I am responsible. I consent for emergency medical treatment or first aid for myself or any child if the same is responsibly necessary.

Signature: _____

(Parent/ Guardian must sign if participant is under age 18)

Date: _____



24th
Annual
WALK

FOR



Sunday,
June 16, 2019
2PM

Held at: The Glades Town Park
10 Spruce Lane
Oakland, MD 21550

Food, Raffles &
Celebration of Life

**NATURAL GAS LIQUIDS
INFRASTRUCTURE within
APPALACHIAN STORAGE HUB (ASH)
AREA of INTEREST**

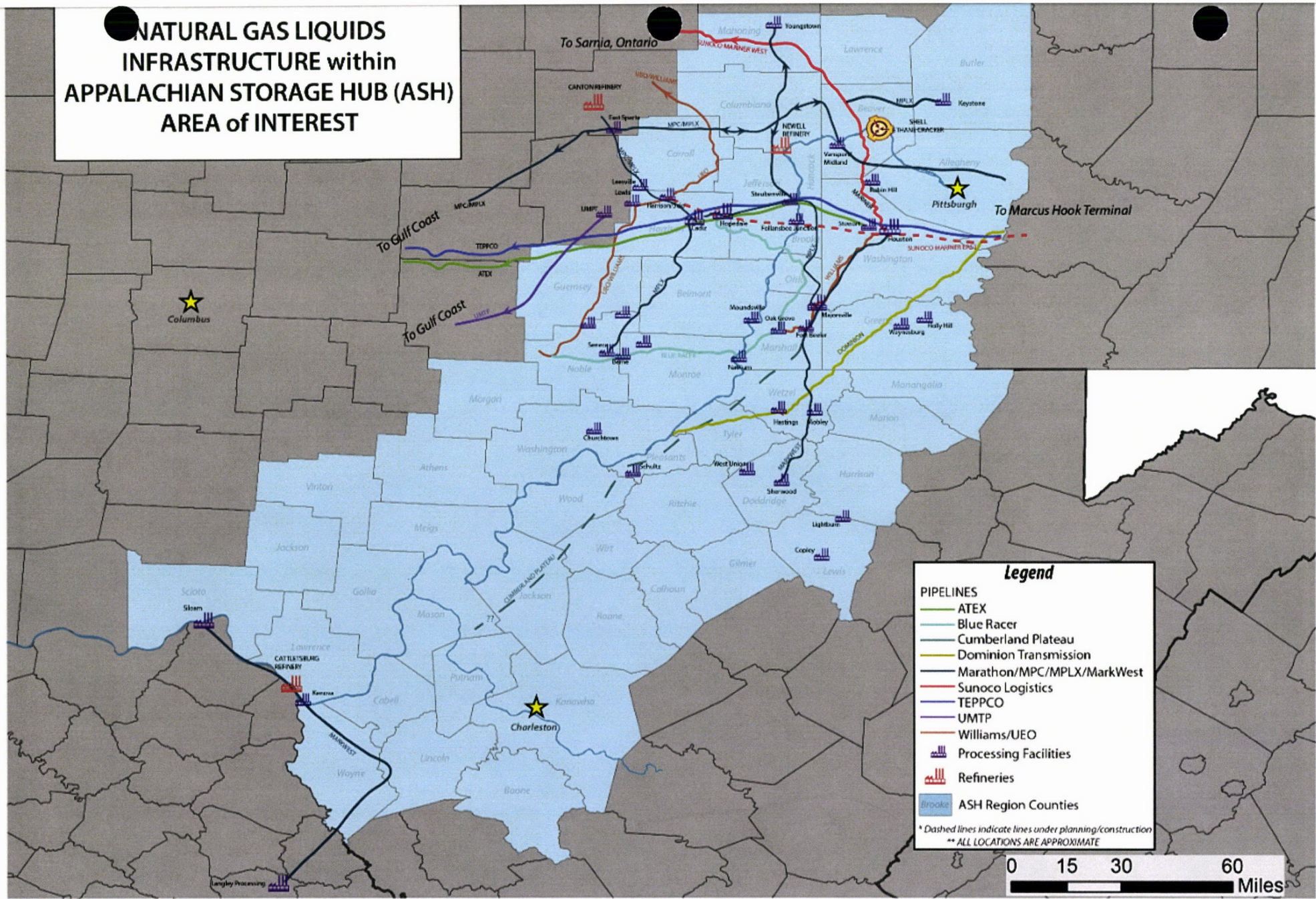


Figure 4-26. Natural gas liquids infrastructure (existing and planned) within the AOI. All locations are approximate.

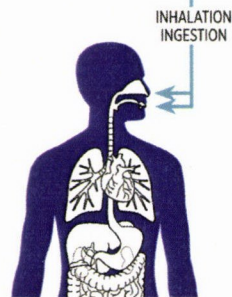
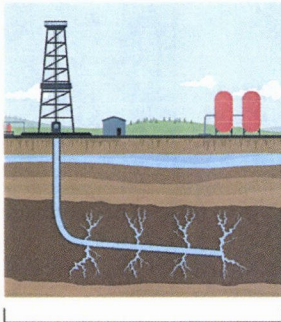
FIGURE 2

Plastic & Health: The Hidden Costs of a Plastic Planet

Humans are exposed to a large variety of toxic chemicals and microplastics through inhalation, ingestion, and direct skin contact, all along the plastic lifecycle.

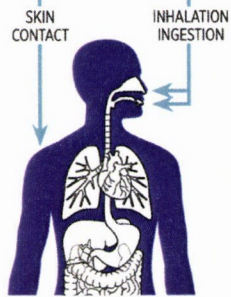
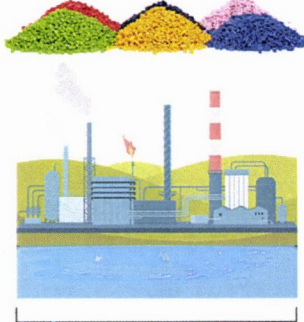
DIRECT EXPOSURE

Extraction & Transport



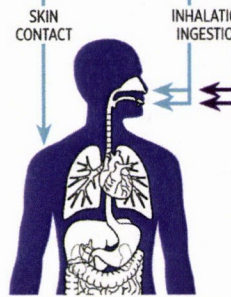
- **Emissions:** include Benzene, VOCs, and 170+ toxic chemicals in fracking fluid
- **Exposure:** inhalation and ingestion (air and water)
- **Health:** affects the immune system, sensory organs, liver, and kidney, impacts include cancers, neuro-, reproductive, and developmental toxicity

Refining & Manufacture



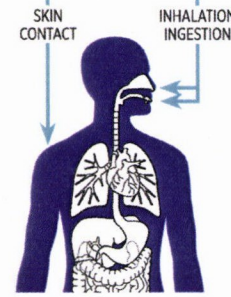
- **Emissions:** include Benzene, PAHs, and Styrene
- **Exposure:** inhalation, ingestion, skin contact (air, water, and soils)
- **Health:** impacts can include cancers, neuro-toxicity, reproductive toxicity, low birth weight, and eye and skin irritation

Consumer Use



- **Emissions:** include heavy metals, POPs, carcinogens, EDCs, and microplastics
- **Exposure:** inhalation, ingestion, and skin contact
- **Health:** affects renal, cardiovascular, gastrointestinal, neurological, reproductive, and respiratory systems; impacts include cancers, diabetes, and developmental toxicity

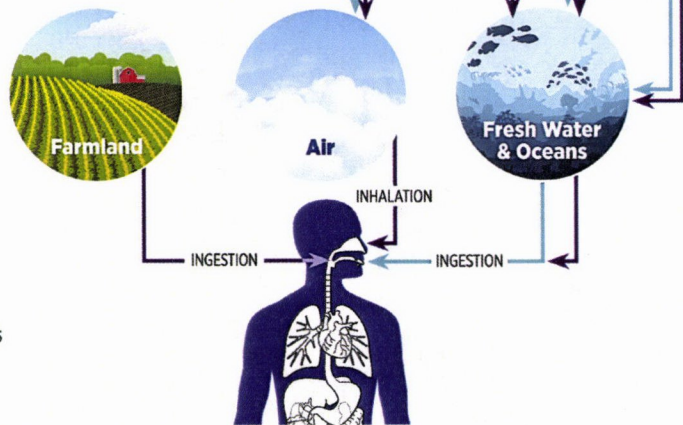
Waste Management



- **Emissions:** include heavy metals, dioxins and furans, PAHs, toxic recycling
- **Exposure:** ingestion and inhalation (air, ash, slag)
- **Health:** impacts include cancers, neurological damages, and damages to immune, reproductive, nervous, and endocrine system

ENVIRONMENTAL EXPOSURE

- **Microplastics** (e.g. tire dust and textile fibers) and **toxic additives:** including POPs, EDCs, carcinogens, and heavy metals
- **Exposure:** inhalation and ingestion (air, water, and food chain)
- **Health:** affects cardiovascular, renal, gastrointestinal, neurological, reproductive, and respiratory systems, impacts include cancers, diabetes, neuro-, reproductive, and developmental toxicity



KEY: ———> Microplastics ———> Chemicals